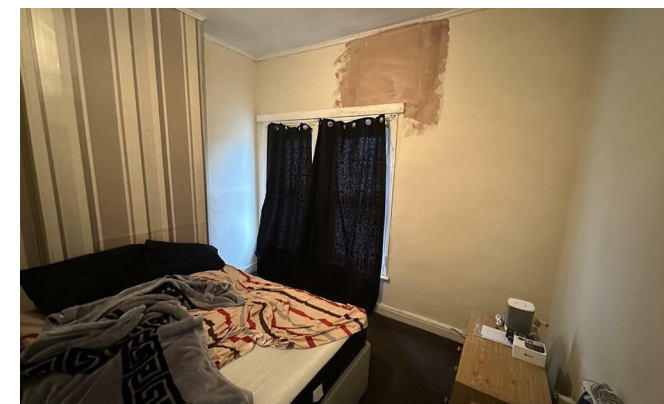
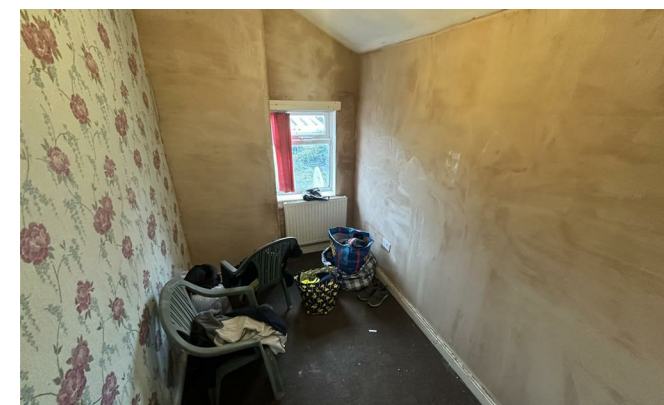




, 15 Belmont Road B21 0AU

- Front reception room 3.56m x 3.22m
 - Kitchen 2.93m x 2.93m
- Bedroon One 2.42m x 3.66m
- Bedroom Three 3m x 1.90m
- Rear Reception room 3.66m x 2.52m
 - Bathroom 1.72m x 2.85m
- Bedroom Two 3.68m x 3.40m

Offers Around £157,000 Freehold



*** 3 BEDROOM TERRACED HOME PERFECTLY SUITED AS A FAMILY HOME OR AS AN INVESTMENT PROPERTY *** This 3 bedroom, terraced house comprises an, Porch, Front reception room, Rear reception room, Kitchen, , Shower room, 3 Bedrooms, and a Rear yard.

APPROACH: Slabbed path

Porch entrance

GROUND FLOOR

Front Reception room : UPVC window with front aspect, central heating radiator, ceiling light point.

Rear Reception room: UPVC window with rear aspect, central heating radiator, ceiling light point.

KITCHEN: Having floor-standing and wall-mounted cabinets, counter worktops. 4 Ring gas cooker. Also, a Window overlooking the rear of the property.

SHOWER ROOM: Shower, toilet and handbasin. With partial tiling on the bath and handbasin with laminated flooring.

YARD: Enclosed with wooden Fence and shed at rear of YARD.

FIRST FLOOR

BEDROOM One: carpet, central heating radiator, electric socket points, window overlooking front aspect.

BEDROOM Two: central heating radiator, electric socket points, window overlooking rear aspect.

BEDROOM Three: central heating radiator, electric socket points, window overlooking rear aspect.

Dimensions:

Front Reception room: 3.56m x 3.22m

Rear reception room: 3.66 x 2.52

Kitchen: 2.93m x 2.93m

Shower room: 1.72m x 2.85m

First Floor



Local Authority **Birmingham**
Council Tax Band **A**
EPC Rating

Pam Estates Ltd Office

187 Rookery Road, Handsworth,
Birmingham, West Midlands, B21 9QZ

Contact

01215549990
info@pamestates.co.uk
<https://www.pamestates.co.uk/>

Agents Note: Whilst every care has been taken to prepare these particulars, they are for guidance purposes only. All measurements are approximate and for general guidance purposes only and whilst every care has been taken to ensure accuracy, they should not be relied upon and potential buyers/tenants are advised to recheck the measurements.